

### Play value

If you place your head in the stone's hollow and hum different notes, it is possible to find the note at which resonance occurs, and this causes a pleasant gently vibrating sensation throughout your body. You are transported into your own private world.

### Recommended for

- School children
- Young people
- Adults
- Older people
- Public play areas without supervision, such as playgrounds, parks or similar

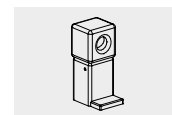
### Barrier-free

- Independent play

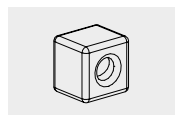


Acoustic effect	soft
Vandalism	not vulnerable
Supervision	not necessary
Explanation Board	included
Installation	indoors and outdoors
Safety check (DIN EN 1176)	not necessary
Installation in concrete	possible

**Small Singing Stone**  
**graubner** Play Stations  
 for Developing the Senses

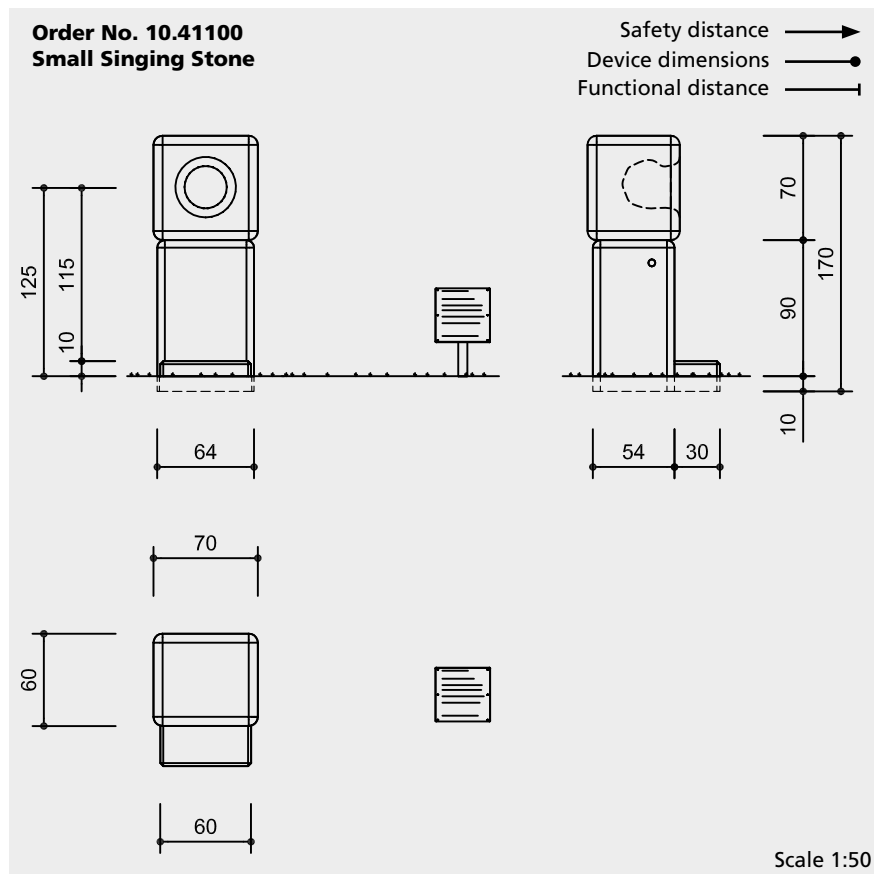


10.41100



10.41300





## Technical information

Hewn cubic monolithic basalt lava singing stone and pedestal with textured surface and strongly rounded edges

## Ground anchor

All parts used for anchoring to the ground are made of hot-dip galvanised steel or stainless steel



## For more detailed explanation of the quality characteristics see price list.

Specially formed cavity (singing hollow) with undercut for optimum resonance effect, with water outlet

Support for Explanation Board made of stainless steel

## Dimensions

(small deviations possible)

## Order No. 10.41100 Small Singing Stone < with pedestal and step

Height	1.70 m
Height stone	0.70 m
Height step	0.10 m
Width stone	0.70 m
Weight	1440 kg

## Order No. 10.41300 Small Singing Stone without pedestal and without step

Height stone	0.70 m
Width stone	0.70 m
Weight	570 kg

## Components

### Order No. 10.41100

- 1 Small Singing Stone with 2 anchor irons
- 1 Pedestal
- 1 Step
- 1 Explanation Board with support for dowelling and 4 heavy duty anchors

### Order No. 10.41300

- 1 Small Singing Stone with 2 anchor irons
- 1 Explanation Board with support for dowelling and 4 heavy duty anchors

## Trademark

30 2005 500 000 Germany  
40-0682207 South Korea

## Installation information

Recommended space  
4.00 x 3.00 m

## Foundations

### Order No. 10.41100

#### Small Singing Stone

1 item 100 x 80 x 60 cm

Excavation depth 70 cm

Recess 5 x 5 x 20 cm

#### Explanation Board

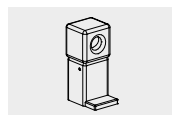
1 item 40 x 40 x 40 cm

Excavation depth 60 cm

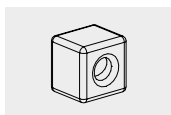
## Attention:

**Exact measurements may vary;  
for all installation dimensions refer  
to current assembly instructions.**

Technical changes reserved.



10.41100



10.41300