

Instructions for wear checks of play equipment

The equipment must be checked for correct operation and safety, especially the points listed below:

Proof of maintenance

Location

Date of installation

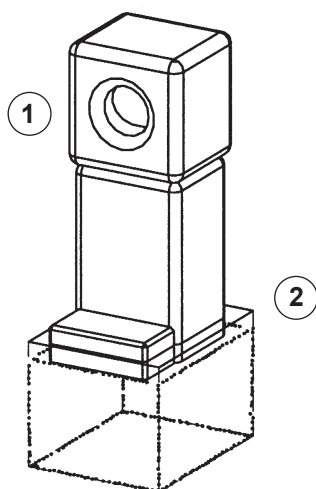
Checks depend on the type of equipment. Any equipment with moving parts must be checked at least twice a year, static equipment at least once a year.

Intervals for maintenance work and checks generally depend on

- location
- kind of use
- frequency of use
- possible vandalism

For more details see also "General instructions for maintenance of playgrounds".

Small Singing Stone
Order No. 10.41100/10.41300



Cleaning

1. Clean the sound opening from waste with a jet steam cleaner or water and brush.

Structural stability

2. Check anchoring to the ground once a year.

☐
☐

Special notes, e. g. for repairs

Repair not carried out, it is still possible to play on equipment

☐

Repair not carried out, equipment is taken out of action

☐

All work carried out, everything is in order

☐

Maintenance carried out by:

..... Date