

Play value

The attractive shape of the complex Hexagonal Tower, including a lockable equipment room, is particularly suited as an identification element in a play area. It has a very special appeal and is often the centrepiece of a playground. Permanently installed intermediate floors create cosy rooms which are a stimulus to role-play. A bench in the bottom room is an inviting place to meet for a chat. Climbing up the ladder to the next highest room is also very exciting.

Fundamental characteristics

- Lockable room with four big shelves
- Easily accessible seating area in the bottom part
- Two elevated play levels accessible via ladders
- Unique hexagonal design
- Particularly suitable for small outdoor spaces that call for a special space concept
- Incentive for playing: role-play games, hide and seek
- Movement: climbing

Recommended for

- Kindergarten children
- School children
- Supervised play areas, such as kindergartens, schools after-school programmes or similar
- Public play areas without supervision, such as playgrounds, parks or similar



**Hexagonal Tower
with lockable equipment room**



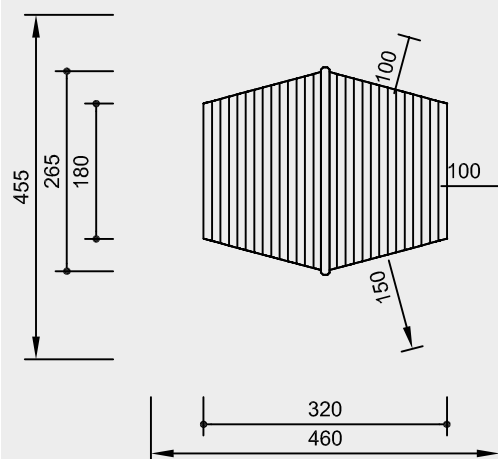
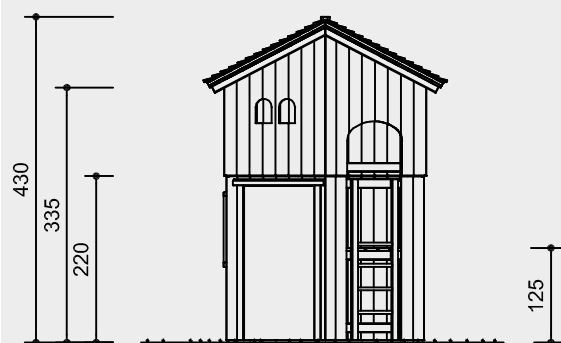
3.20900

Order No. 3.20900

Hexagonal Tower

with lockable equipment room

Safety distance →
 Device dimensions —●—
 Functional distance —|—



Scale 1:100

Safety check according to DIN EN 1176

Components

- 1 Tower with lockable equipment room
 Interior fittings:
 - 1 Bench with table
 - 2 Floor halves
 - 1 Ladder with balustrade
 - 4 Big shelves
- 2 Roof sections
- 6 Steel feet

Installation information

Surfacing requirements
 corresponding to a fall height of ≤ 1.50 m
 (please refer to price list for more
 detailed information)

Foundations
 6 items 60 x 60 x 60 cm
 Excavation depth 80 cm

Attention:
Exact measurements may vary;
for all installation dimensions refer
to current assembly instructions.
 Technical changes reserved.

Technical information

Equipment made of non-impregnated
 mountain larch

Core-free

Sawn-timbers core-free, thus decreasing
 occurrences of cracking and undesired
 changes in shape



Tongue and groove

Tongue and groove planks made of
 4 cm solid wood, highly resilient, no
 trickling of dust / sand, protection
 against direct rain



Hardwood rungs

Climbing rungs made of hardwood (ash)
 Ø 4.2 cm, milled and mortised, secured
 against twisting, easy to grip and not
 cold for children to touch



Plywood

Plywood made of mountain larch,
 three-layer (3 cm) or five-layer (4 cm).
 High dimensional stability,
 waterproof, glued according to
 DIN EN 13353:2011



Ground anchor

All parts used for anchoring to the
 ground are made of hot-dip galvanised
 steel or stainless steel



**For more detailed explanation of the
 quality characteristics see price list.**

Two-layer roof structure, rainproof
 thanks to underlay

Window openings glazed with
 8 mm safety glass

Dimensions

(small deviations possible)

Height	4.30 m
Floor heights	1.25 / 2.20 m
Length	3.20 m
Width	2.65 m
Weight	1150 kg



3.20900