

### Play value

The likeable appeal of the chicken plays a role in creating a play environment which is favourable for children. The coloured design immediately attracts children to play. The net in the stomach is a small meeting place where children can come to find seclusion.



Special version with ramp and stairs, Photo © Daniel Perales



### Fundamental characteristics

- High-quality design
- Coloured elements, eye-catcher
- Very special appeal
- Movement: climbing

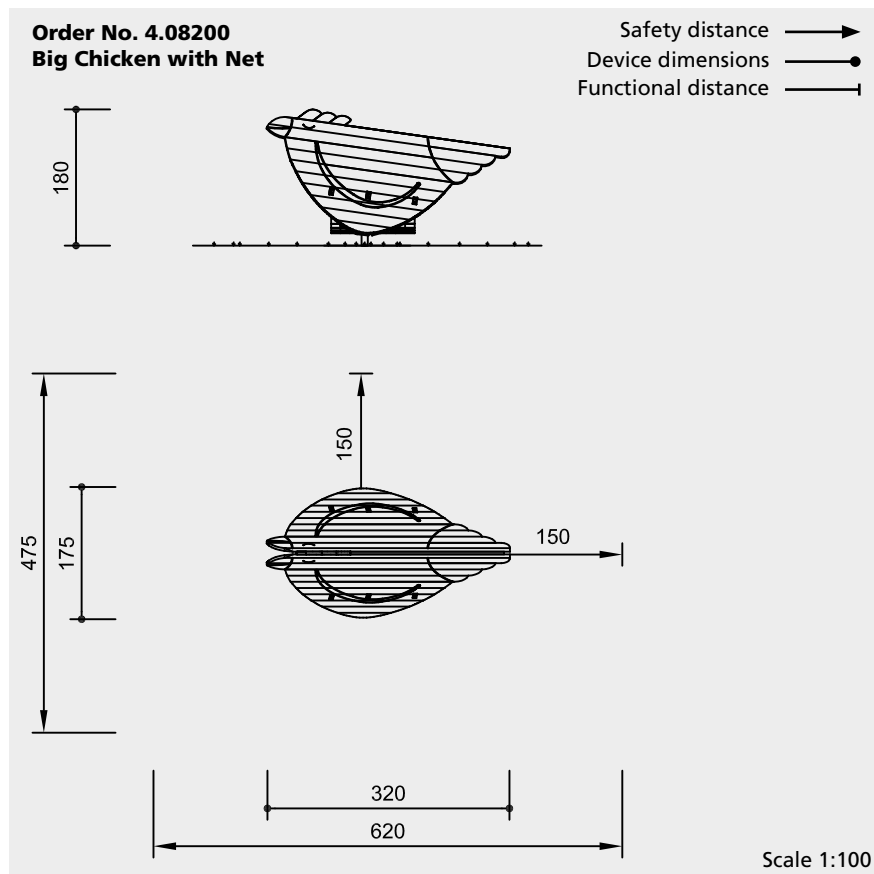
### Recommended for

- Kindergarten children
- Supervised play areas, such as kindergartens, schools, after-school programmes or similar
- Public play areas without supervision, such as playgrounds, parks or similar

### Big Chicken with Net



4.08200



Safety check according to DIN EN 1176

#### Components

- 2 Side parts in the shape of a chicken, coloured design according to picture
- 1 Net
- 2 Steel feet

#### Installation information

Surfacing requirements corresponding to a fall height of  $\leq 0.60$  m (please refer to price list for more detailed information)

Foundations  
2 items 60 x 60 x 60 cm  
Excavation depth 80 cm

**Attention:**  
**Exact measurements may vary;**  
**for all installation dimensions refer**  
**to current assembly instructions.**  
Technical changes reserved.

#### Technical information

Equipment made of non-impregnated mountain larch

##### Core-free

Sawn-timbers core-free, thus decreasing occurrences of cracking and undesired changes in shape



##### Tongue and groove

Tongue and groove planks made of 4 cm solid wood, highly resilient, no trickling of dust / sand, protection against direct rain



##### Hercules rope

Hercules rope, for spliced net connections. A compound of steel rope for the core and polyester or polyamide yarn for the sheath. High abrasion resistance, 4 or 6 strands



##### Aluminium rope pressing

Aluminium rope pressing, cylindrically pressed, with rounded ends



##### Rope connection with joint

Close-fitting connection with joint, without dangerous openings, with sintered bush and adjustable screw connection



##### Ground anchor

All parts used for anchoring to the ground are made of hot-dip galvanised steel or stainless steel



**For more detailed explanation of the quality characteristics see price list.**

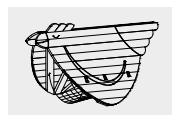
##### Colour

Solvent-free acrylic paints are used for colouring; the wood is painted in a way which allows the structure of the wood to remain clearly visible

##### Dimensions

(small deviations possible)

Height	1.80 m
Length	3.20 m
Width	1.75 m
Weight	240 kg



4.08200