

Instructions for wear checks of play equipment

The equipment must be checked for correct operation and safety, especially the points listed below:

Proof of maintenance

Playground.....

Date of installation

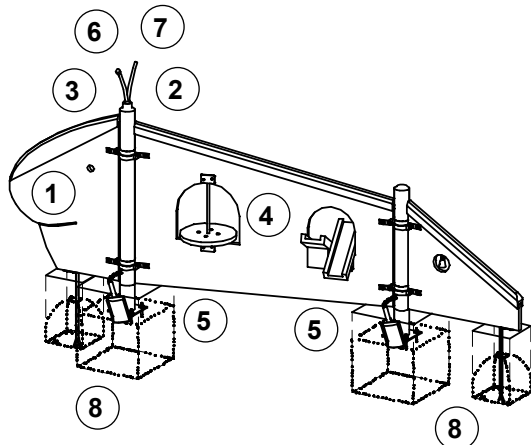
Checks depend on the type of equipment.
Any equipment with moving parts must be checked at least twice a year, static equipment at least once a year.

Intervals for maintenance work and checks generally depend on

- location
- usage
- frequency of use
- possible vandalism

For more details see also our general instructions for maintenance of playgrounds!

Caterpillar - Type 04
Order No. 5.00025



Wooden parts

1. Check for rot and, if necessary, smooth out splinters and round off sharp edges of cracks. ☐
2. Check that all bolts and screws are tight and retighten if necessary. ☐
3. If required, touch up or renew paintwork. ☐

Turntable

4. Check that turntable move smoothly. ☐

Sand shovel

5. Check for wear and stability. ☐

Antennae

6. Check that antennae are securely connected. ☐
7. Replace if steel reinforcement is damaged. ☐

Structural stability

8. In order to check for rot at wooden parts and steel feet for corrosion, uncover the foundations once a year. ☐

Special notes, e.g. for repairs

Repair not carried out,
it is still possible to play on equipment ☐

Repair not carried out,
equipment is taken out of action ☐

All work carried out,
everything is in order ☐

Maintenance carried out by:

..... Date