



### Play value

The well designed Water Push Button supplies externally connected nozzles with water when the bright red hemisphere is pressed down. Due to its agreeable design, the Water Push Button can also be used in less natural play surroundings.

### Fundamental characteristics

- High-quality design
- Automatic water stop
- Unique and original
- Incentive for playing: hemisphere, water
- Movement: physical effort

### Recommended for

- School children
- Supervised play areas, such as kindergartens, schools, after-school programmes or similar
- Public play areas without supervision, such as playgrounds, parks or similar
- Swimming pools without supervision, such as outdoor pools, adventure pools or similar
- Water play areas without supervision

### Barrier-free

- Independent play



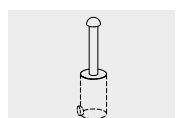
Photo © Daniel Perales

### Water Push Button with installation housing

#### Planning information

The Water Push Button is only suitable for direct connection to the pressure line. Pushing the hemispherical button activates the Spraying Heads. When the hemispherical button is pressed once, a valve is activated that automatically stops the water flow after 30 seconds (from 0 up to 30 seconds adjustable), even if pressed permanently.

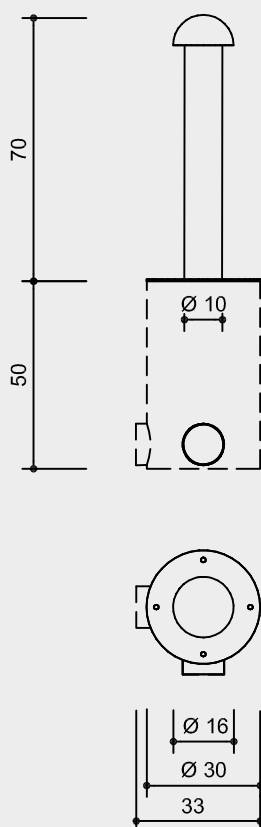
Individual solutions for the water supply must be devised, depending on the plans. Up-to-date details on the connection for the water supply and other technical information is available to download as a table at our website [www.richter-spielgeraete.de](http://www.richter-spielgeraete.de).



5.18020 / 5.18022

**Order No. 5.18020 / 5.18022**  
**Water Push Button with installation housing**

Safety distance →  
 Device dimensions —●—  
 Functional distance —|—



**Technical information**

Equipment made of stainless steel, glass bead blasted, with coloured hemisphere RAL 3000, other colours on request

Connection to mains water is integrated in the galvanised pillar;  
 Connection thread on Equipment 3/4" inside; min. 2.5 bar max. 5 bar water pressure

We recommend a compression proof diameter 1/2 inch Water requirement approx. 10 l/min

**Order No. 5.18022**

As above, but in addition with programmable flushing device for direct connection to the pressure line.

**Dimensions**

(small deviations possible)

**Order No. 5.18020 / 5.18022**  
**Water Push Button with installation housing**

Height	0.70 m
Diameter column	0.10 m
Weight	26 kg

Scale 1:20

Safety check according to DIN EN 1176

**Components**

**Order.-Nr.: 5.18020**

- 1 Water Push Button with programmable flushing device for direct connection to the pressure line

**Order.-Nr.: 5.18022**

- 1 Water Push Button with installation housing and with programmable flushing device for direct connection to the pressure line

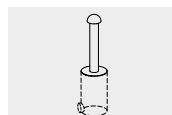
**Installation information**

Reinforced surface  
 Foundations  
 1 item 40 x 40 x 30 cm  
 Excavation depth 80 cm

**During the frost period the inset with the valve needs to be disassembled.** The opening can be closed with a winter lid **Order No. 0.97840** (see price list).

**Attention:**

**Exact measurements may vary, for all installation dimensions refer to current installation instructions.**  
 Technical changes reserved.  
**For use in aggressive environments such as salt or chlorine water, the equipment is also available in marine grade steel (V4A).**



**5.18020 / 5.18022**