

Play value

The well designed Water Push Button supplies externally connected nozzles with water when the bright red hemisphere is pressed down. Due to its agreeable design, the Water Push Button can also be used in less natural play surroundings.

Fundamental characteristics

- High-quality design
- Automatic water stop
- Unique and original
- Incentive for playing: hemisphere, water
- Movement: physical effort

Recommended for

- School children
- Supervised play areas, such as kindergartens, schools, after-school programmes or similar
- Public play areas without supervision, such as playgrounds, parks or similar
- Swimming pools without supervision, such as outdoor pools, adventure pools or similar
- Water play areas without supervision

Barrier-free

- Independent play



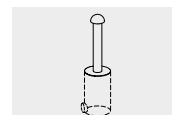
Photo © Daniel Perales

Water Push Button with installation shaft

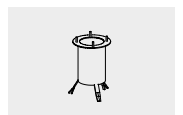
Planning information

The Water Push Button is only suitable for direct connection to the pressure line. Pushing the hemispherical button activates the Spraying Heads. When the hemispherical button is pressed once, a valve is activated that automatically stops the water flow after 30 seconds (from 0 up to 30 seconds adjustable), even if pressed permanently.

Individual solutions for the water supply must be devised, depending on the plans. Up-to-date details on the connection for the water supply and other technical information is available to download as a table at our website www.richter-spielgeraete.de.

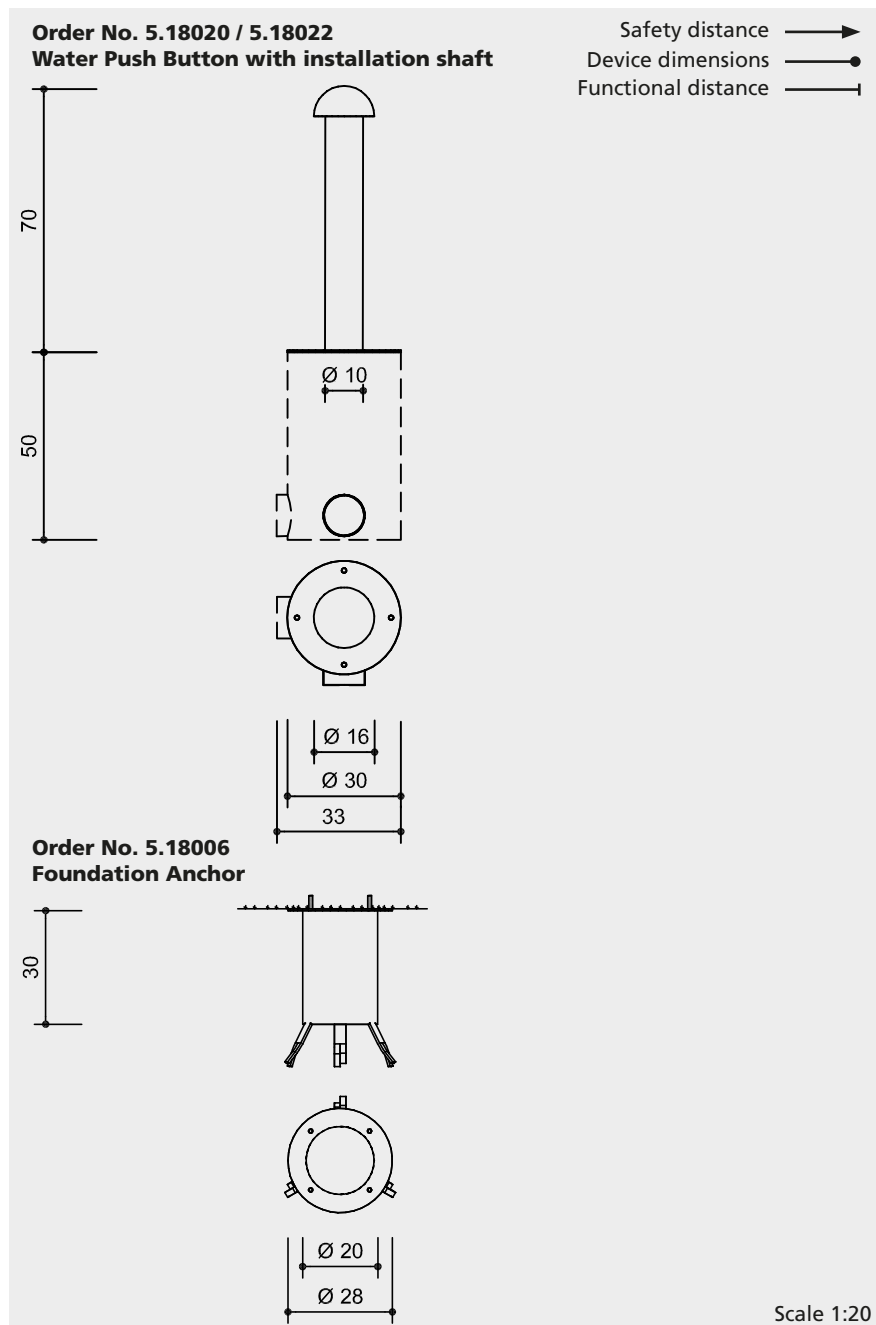


5.18020 / 5.18022



5.18006





Safety check according to DIN EN 1176

Components

Order.-Nr.: 5.18020

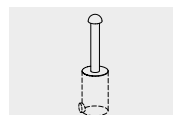
- 1 Water Push Button with installation shaft for external Spray Head
- 1 Winter Lid made of stainless steel (Order No. 0.97840)

Order.-Nr.: 5.18022

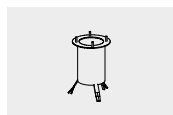
- 1 Water Push Button with installation shaft and with programmable flushing device for external Spray Head
- 1 Winter Lid made of stainless steel (Order No. 0.97840)

Order No. 5.18006

- 1 Foundation Anchor



5.18020 / 5.18022



5.18006

Installation information

Reinforced surface
 Foundations
 1 item 40 x 40 x 30 cm
 Excavation depth 80 cm

During the frost period the inset with the valve needs to be disassembled. The opening can be closed with the winter lid.

Attention:
 Exact measurements may vary, for all installation dimensions refer to current installation instructions.
 Technical changes reserved.
For use in aggressive environments such as salt or chlorine water, the equipment is also available in marine grade steel (V4A).

Technical information

Equipment made of stainless steel, glass bead blasted, with coloured hemisphere RAL 3000, other colours on request

Connection to mains water is integrated in the galvanised pillar;
 Connection thread on Equipment 3/4" inside; min. 2.5 bar max. 5 bar water pressure

We recommend a compression proof diameter 1/2 inch Water requirement approx. 10 l/min

Order No. 5.18022

As above, but in addition with programmable flushing device for direct connection to the pressure line; powered by an internal battery.

Order No. 5.18006
Foundation Anchor

made of galvanised steel

Dimensions

(small deviations possible)

Order No. 5.18020 / 5.18022
Water Push Button with installation shaft

Height	0.70 m
Diameter column	0.10 m
Weight	26 kg

Order No. 5.18006
Foundation Anchor

Height	0.30 m
Diameter	0.28 m
Weight	8 kg

Order No. 0.97840
Winter Lid

Diameter	0.30 m
Weight	1.30 kg