

The equipment must be checked for correct operation and safety, especially the points listed below:

Proof of maintenance

Spraying head

1. Screw out brass nozzle insert using a 10-mm Allen key.

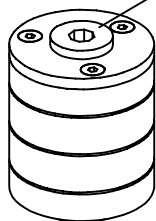
2. Pierce blocked drill holes using a graver or a similarly pointed object and remove all small grains of sand. Clean flow restrictor.

3. Before screwing on the insert again, thoroughly rinse the spraying head pipe by pumping for a good period of time.

4. Screw on the nozzle insert again. Avoid damaging the O-ring in the process.

Recommendation: Lubricate the O-ring with valve grease.

**Brass
nozzle insert**



**Repair not carried out,
equipment is taken out of action**

**All work carried out,
everything is in order**

Maintenance carried out by:

..... Date

Special notes, e.g. for repairs