

**The equipment must be checked for correct operation and safety, especially the points listed below:**

### Proof of maintenance

## **Joints**

1. Check that swivel joint moves smoothly (remove sand which has accumulated around the support foot).
2. Check that main joint moves smoothly.
3. Check that the joints of the excavator arm and excavator bucket move smoothly.
4. Apply grease to the lubricating nipple on the bucket joint.

## Brake

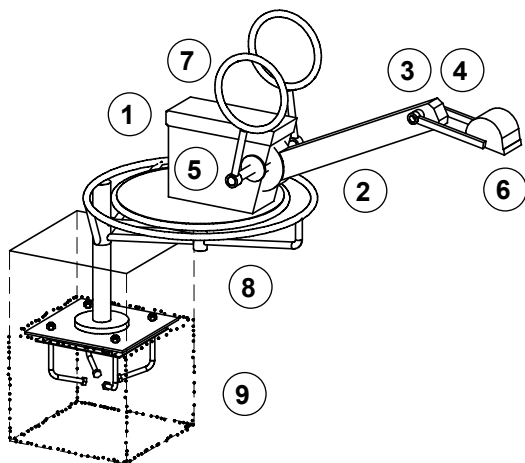
5. Perform operational test: when load is placed on the seat, it should be possible to turn the platform; with no load placed on the seat, any turning movement should stop immediately. Replace rubber buffer if worn down.

- ### Excavator bucket

6. File down any sharp edges on the shovel caused by wear and tear.

**Seat**

7. Check condition of seat surface, smooth if necessary.



## Lubrication

8. If necessary, lubricated with suitable grease (universal grease)

## Structural stability

9. Check anchoring to the ground once a year.

Special notes, e.g. for repairs

## Repair not carried out, it is still possible to play on equipment

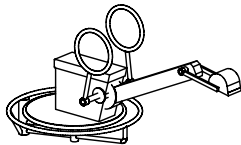
**Repair not carried out,  
equipment is taken out of action**

**All work carried out,  
everything is in order**

**Maintenance carried out by:**

..... **Date** .....

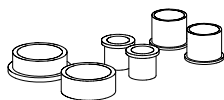
**Spare parts**  
**Large Excavator**  
**Order No. 5.30000**



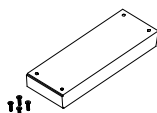
Please note that the safety standards of the equipment must not be affected. Therefore, when carrying out repairs it is helpful to **only use original parts**.

**Order No.    Spare parts**

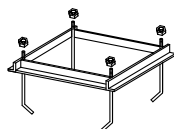
**0.88180    Set of brass bushes**



**99.00660    Seat**



**0.70250    Foundation frame**



**0.88181    Rubber buffer**

