



### Play value

Our playscapes have been designed especially for day-care centres. They consist of individual modules which can be freely varied and combined to suit individual needs. We create exciting and diverse playscapes from platforms and different wooden boxes that can be filled with water, plants, play sand or balls. The system is complemented by sun sails which can be mounted in a number of ways.

### Fundamental characteristics

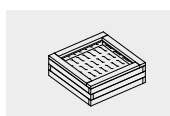
- Foundations not available
- Friendly appearance
- Child-oriented dimensions according to ergonomic criteria
- The space-defining design appeals to the senses
- Numerous play offers
- Sunshade

### Recommended for

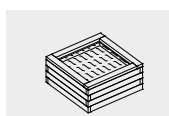
- Children under 3 years
- Kindergarten children
- Supervised play areas, such as kindergartens, schools, after-school programmes or similar

**The Waterbox is not suitable for children under 3 years of age**

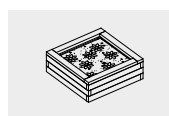
**Waterbox  
Plant Box  
Play Box**



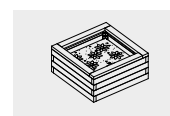
5.54010



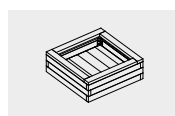
5.54015



5.54020



5.54025



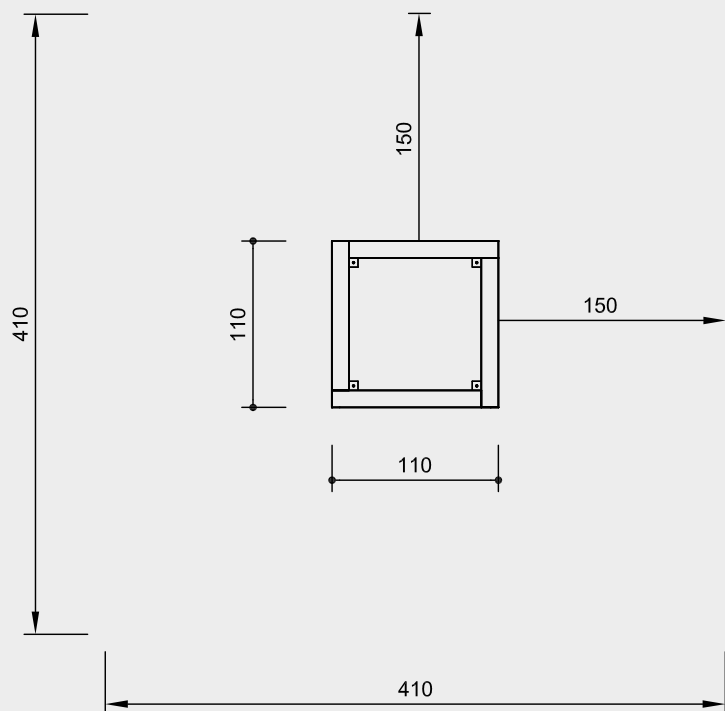
5.54040

**Order No. 5.54010 Waterbox low**  
**Order No. 5.54020 Plant Box low**  
**Order No. 5.54040 Play Box**

Safety distance →  
 Device dimensions —●—  
 Functional distance —|—



**Order No. 5.54015 Waterbox high**  
**Order No. 5.54025 Plant Box high**



Scale 1:50

Safety check according to DIN EN 1176

## Components

- 1 Play box without content
- 1 Water box with tub made of stainless steel and drain plug
- 1 Plant box with dimpled membrane (HDPE)

## Installation information

Surfacing requirements corresponding to a fall height of  $\leq 0.60$  m (please refer to price list for more detailed information)

Foundations  
 no foundations required

The surfacing should be level and firm.

**Attention:**  
**Exact measurements may vary; for all installation dimensions refer to current assembly instructions.**  
 Technical changes reserved.

## Technical information

Equipment made of non-impregnated mountain larch

### Core-free

Sawn-timbers core-free, thus decreasing occurrences of cracking and undesired changes in shape



**For more detailed explanation of the quality characteristics see price list.**

### Order No. 5.54010 / 5.54015 Waterbox

Tub made of stainless steel incl. easy-to-close water outlet, height 10 cm

### Order No. 5.54020 / 5.54025 Plant Box

Compression-proof and rot-free dimpled membrane

## Dimensions

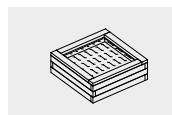
(small deviations possible)

### Order No. 5.54010 Waterbox low Order No. 5.54020 Plant Box low Order No. 5.54040 Play Box

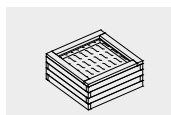
Height	0.40 m
Length	1.10 m
Width	1.10 m
Weight	
<b>Order No. 5.54010</b>	95 kg
<b>Order No. 5.54020</b>	65 kg
<b>Order No. 5.54040</b>	65 kg

### Order No. 5.54015 Waterbox high Order No. 5.54025 Plant Box high

Height	0.50 m
Length	1.10 m
Width	1.10 m
Weight	
<b>Order No. 5.54015</b>	110 kg
<b>Order No. 5.54025</b>	80 kg



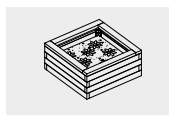
5.54010



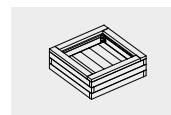
5.54015



5.54020



5.54025



5.54040