



Order No. 6.26402 Large Spinner

Play value

Children recognise at once that this „Family“ of carousels stands for father, mother and child, despite of their abstract design. The carousels can easily be set in motion, sitting on the disc by hand or being in an upright position by one’s feet. The bent tubes serve as hand holds. Moreover, they can be used for gymnastic exercise. The carousels of the „Family“ line show their special nature mainly as complete installation with all three family members. Due to their formal design, they are very well suited for play areas in city centres and other public places in towns.

Fundamental characteristics

- Dimensions corresponding to different age groups by different sizes of the carousels
- Attractive design
- Playful experience of the pirouette effect
- Incentive for playing: friendly appearance, identification, different sizes
- Movement: moving one’s centre of gravity, turning

Recommended for

- Kindergarten children
- School children
- Supervised play areas, such as kindergartens, schools, after-school programmes or similar
- Public play areas without supervision, such as playgrounds, parks or similar



Order No. 6.26401 Medium Spinner



Order No. 6.26401 Medium Spinner, Photo © Daniel Perales

**Medium Spinner
Large Spinner**

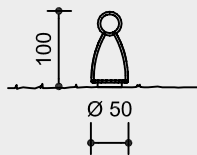


6.26401

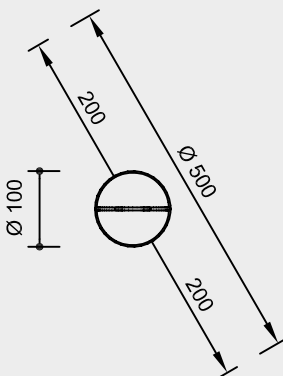
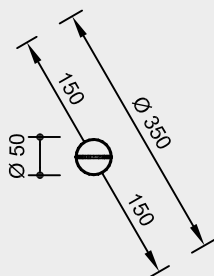
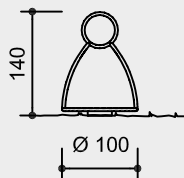


6.26402

**Order No. 6.26401
Medium Spinner**



**Order No. 6.26402
Large Spinner**



Safety distance →
Device dimensions —●—
Functional distance —|—

Scale 1:100

Safety check according to DIN EN 1176

Components

**Order No. 6.26401
Medium Spinner**

- 1 Carousel
- 1 Foundation frame

**Order No. 6.26402
Large Spinner**

- 1 Carousel
- 1 Foundation frame

Installation information

Surfacing requirements
surfacing required as for critical fall height of
Order No. 6.26401 ≤ 0.60 m
Order No. 6.26402 ≤ 1.00 m
(please refer to price list for more detailed information)

Foundations
**Order No. 6.26401
Medium Spinner**
1 item 60 x 60 x 20 cm
Excavation depth 60 cm
**Order No. 6.26402
Large Spinner**
1 item 60 x 60 x 55 cm
Excavation depth 60 cm

Attention:
Exact measurements may vary, for all installation dimensions refer to current installation instructions.
Technical changes reserved.

Technical information

Equipment made of stainless steel, glass bead blasted

Ground anchor

All parts used for anchoring to the ground are made of hot-dip galvanised steel or stainless steel



Roller bearings

High-quality roller bearings made of chrome steel or stainless steel for rotating elements, easy to maintain and exchange, sealed



For more detailed explanation of the quality characteristics see price list.

Sturdy, welded substructure, painted

Easy grip tubes

**Order No. 6.26401
Medium Spinner**

Ø 33.7 mm

**Order No. 6.26402
Large Spinner**

Ø 42 mm

Surfacing made of checker plate

Foundation frame made of steel

Dimensions

(small deviations possible)

**Order No. 6.26401
Medium Spinner**

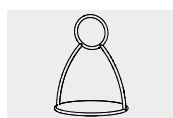
Height	1.00 m
Diameter	0.50 m
Weight	45 kg

**Order No. 6.26402
Large Spinner**

Height	1.40 m
Diameter	1.00 m
Weight	70 kg



6.26401



6.26402