



Play value

Spatial limitation, sitting possibility, equipment for games of skills and for experiencing movements. All this is given by the „Lounging Logs“ installation. This equipment is suited to define play areas and to separate play equipment for different age groups in a positive way. In particular, alternative places to sit, are offered to young people. If someone wants to stand out, they can balance along the beams projecting on both sides. Restlessness and strain can be reduced while slightly rocking up and down on the beams. Furthermore, communication is encouraged, when several children are swinging up and down together.



Standard colour is red.



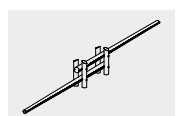
Fundamental characteristics

- Unique and original
- The conical shape of the long logs makes the installation sway
- Incentive for playing: long logs with colour accents
- Movement: balancing, swinging, sitting, rocking

Recommended for

- School children
- Supervised play areas, such as kindergartens, schools, after-school programmes or similar
- Public play areas without supervision, such as playgrounds, parks or similar

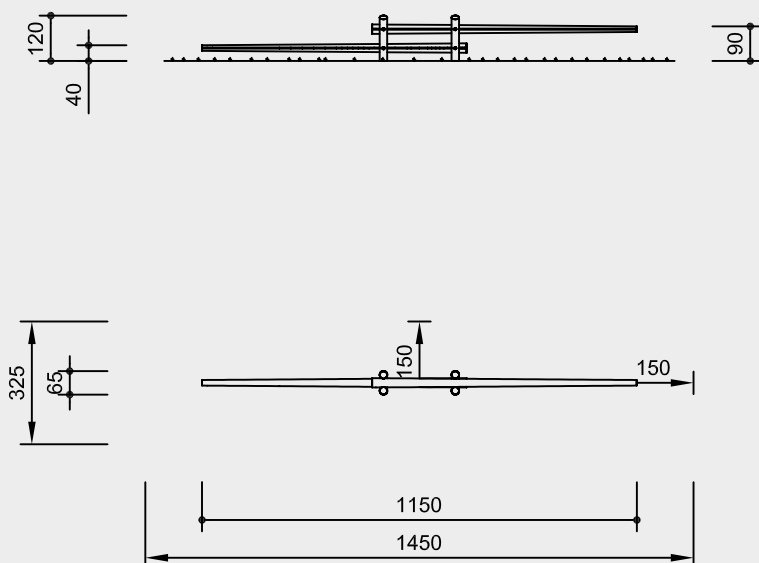
Lounging Logs



7.15000

Order No. 7.15000
Lounging Logs

Safety distance →
Device dimensions —●—
Functional distance —|—



Scale 1:200

Safety check according to DIN EN 1176

Components

- 2 Beams for sitting and playing
- 4 Standing posts made of robinia

Installation information

Surfacing requirements corresponding to a fall height of ≤ 1.00 m (please refer to price list for more detailed information)

Foundations
1 item 310 x 120 x 40 cm
Excavation depth 80 cm
concrete reinforcement needs to be provided for on site

Attention:
Exact measurements may vary;
for all installation dimensions refer
to current assembly instructions.
Technical changes reserved.
Standing posts also available
made of steel (Order No. 7.15001).

Technical information

Equipment made of non-impregnated mountain larch / robinia

Peeled white

Palisades peeled white means that bark, cambium and sapwood are removed, the natural shape of the trunk is preserved and can be experienced



Bevel cut

Vertical stand posts with bevelled end grain section as constructive wood preservation measure



Interlocking

Interlocking connection, with milled metal rings or serrated disc dowels, to reinforce the bolt connection under high loads transverse to the grain direction of the wood



Relief cut

Targeted relief cut as an effective measure against cracks caused by drying. The cut defines the position of the stress equalization in the trunk and minimises natural cracking



For more detailed explanation of the quality characteristics see price list.

Connection of horizontal beams to the support posts according to static requirements

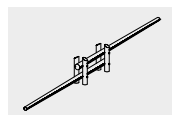
Colour

Solvent-free acrylic paints are used for colouring; the wood is processed in a way which allows the structure of the wood to remain clearly visible, standard colour red

Dimensions

(small deviations possible)

Height	1.20 m
Length	11.50 m
Length of beams for playing	7.00 m
Width	0.65 m
Weight	650 kg



7.15000