

Play value

The Mountain Guard is a high tower with a friendly inclined head, which can also become with the help of various accessories a gentle king or a forest elf if required. He overlooks the area from a seven meter high vantage point. His small „head room“ allows visitors to look through his eyes and assures a safe descent through two exits. The Mountain Guard offers many different possibilities for climbing up and down and is therefore an interesting challenge for movement and skills. Due to its strong formal expressive character, the Mountain Guard defines the atmosphere of the location and is therefore particularly suited to identify a play area and to be its focal point.

Fundamental characteristics

- Harmonious, friendly design
- Strong formal expressive character
- Very special appeal
- Eye-catcher of a play area
- Incentive for playing: curiosity, friendly face, climbing offers
- Movement: climbing, observing

Recommended for

- School children
- Young people
- Supervised play areas, such as schools, after-school programmes or similar
- Public play areas without supervision, such as playgrounds, parks or similar
- Leisure parks



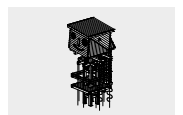
Special version with crane



Mountain Guard

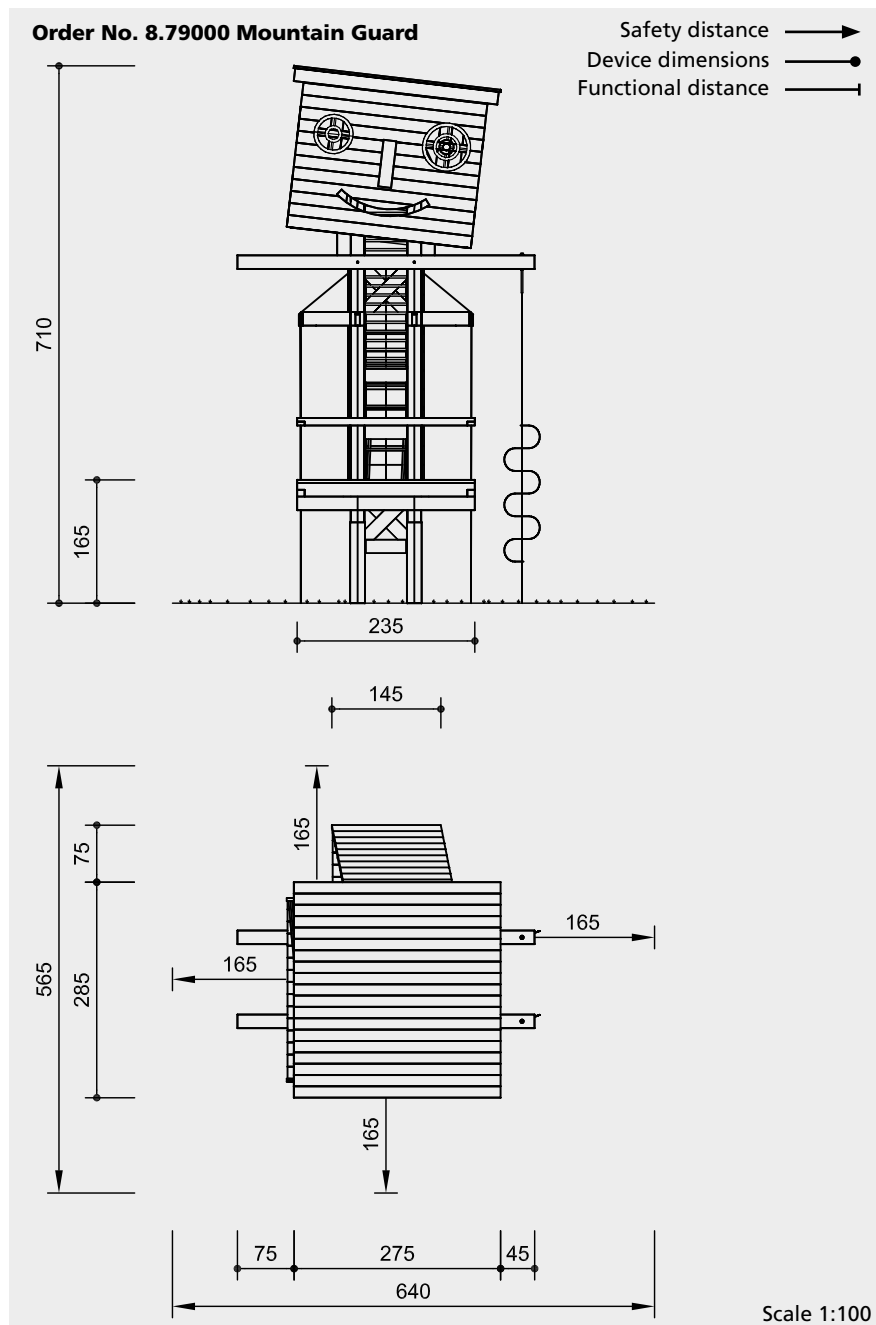
© Richter Spielgeräte GmbH 06/22

Design P. Hannes



8.79000

LudoCrea.ch GmbH — 6074 Giswil — +41 41 675 03 67 — info@ludocrea.ch



Safety check according to DIN EN 1176

Components

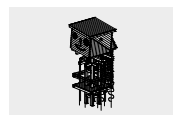
- 1 Complete equipment, consisting of:
 - 1 Head with pivoted telescope
 - 1 Chimney ascent
 - 1 Platform
 - 1 Vertical net tunnel
 - 2 Rope Climbing ladders

Installation information

Surfacing requirements corresponding to a fall height of ≤ 2.00 m (please refer to price list for more detailed information)

Foundations
 1 item 300 x 300 x 20 cm
 Excavation depth 115 cm
 1 item 270 x 270 x 50 cm
 Not separate exavation required
 1 item 185 x 185 x 20 cm
 Not separate exavation required
 2 pieces 30 x 30 x 30 cm
 Excavation depth 50 cm
 Constructive reinforcement on site

Attention:
Exact measurements may vary, for all installation dimensions refer to current installation instructions.
 Technical changes reserved.



8.79000

Technical information

Equipment made of non-impregnated mountain larch

Core-free

Sawn-timbers core-free, thus decreasing occurrences of cracking and undesired changes in shape



Tongue and groove

Tongue and groove planks made of 4 cm solid wood, highly resilient, no trickling of dust / sand, protection against direct rain



Richter Hercules type rope

Richter Hercules type rope, a combination of galvanised six-strand steel cables and polyester yarn, diameter > 20 mm, laid and glued with very good abrasion resistance, strong sheathing even in the case of damage by puncturing



Aluminium rope pressing

Aluminium rope pressing, cylindrically pressed, with rounded ends



S-connectors

S-connectors Ø 8.1 mm, made of high-quality stainless steel, rounded



Ground anchor

All parts used for anchoring to the ground are made of hot-dip galvanised steel or stainless steel



Chains

Chains made of hot-dip galvanized steel (1.4301 / 1.4571 at extra charge) welded before galvanising, short-linked, without eyelets on the connecting parts, easy to exchange and shorten



For more detailed explanation of the quality characteristics see price list.

Supporting construction made of square timber 18/18 cm, not core-free

Carpenter like connections

Fittings hot-dip galvanised

Ascent made of stainless steel, glass bead blasted, diameter of the rungs 30 mm

Moveable telescope made of plastic

Dimensions

(small deviations possible)

Height	7.10 m
Length	3.95 m
Width	3.60 m
Weight	3000 kg